

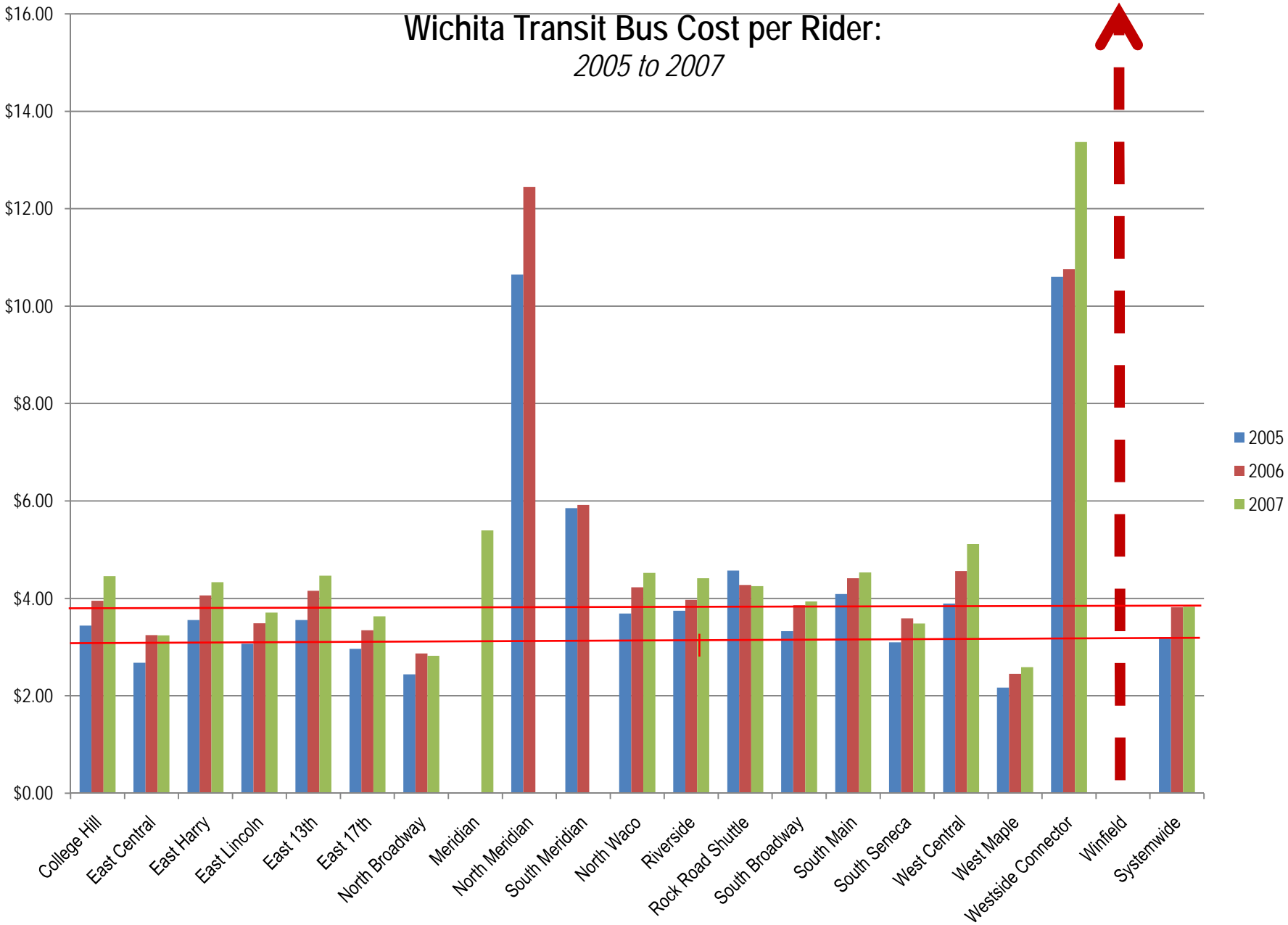
Wichita Transit Fixed Route Performance Overview

2005 to 2007

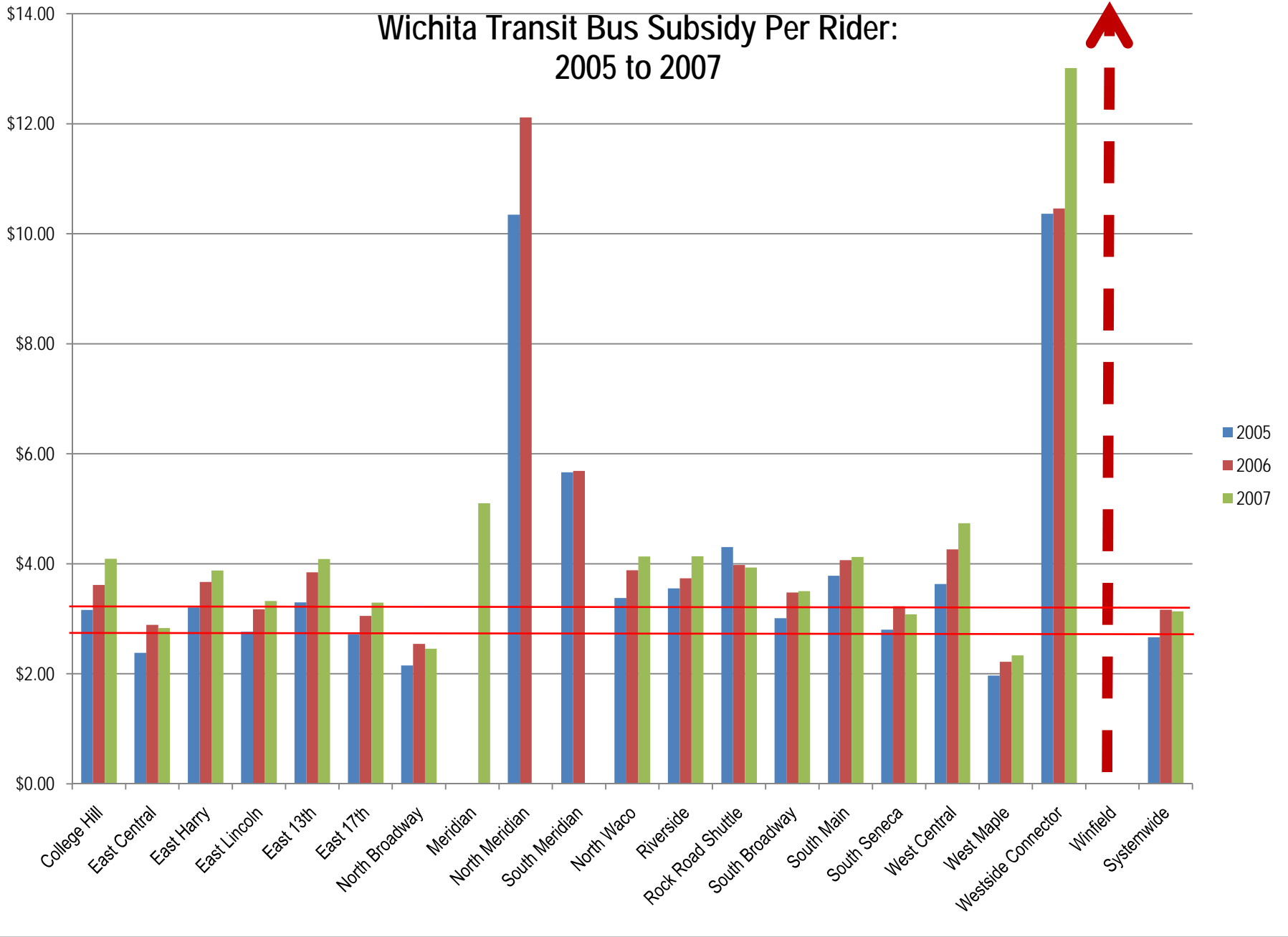
The following charts illustrate important statistics and trends regarding costs and ridership from 2005 through 2007. These charts include:

- *Cost per Rider*—shows, by route, the annual operating cost per rider carried for each route and the system as a whole. The lower the cost, the better. The Winfield route cost per rider was over \$300 per rider for 2005, 2006 and 2007. This route was discontinued in 2008.
- *Subsidy per Rider*—shows, by route, the annual operating cost less fares collected per rider carried for each route and the system as a whole. The lower the subsidy, the better. The Winfield route cost per rider was over \$300 per rider for 2005, 2006 and 2007. This route was discontinued in 2008.
- *Riders per Revenue Hour*—measures the number of riders using the service in terms of quantity of service on the street. The chart shows annual average productivity for each route as well as for the system as a whole. The higher the ratio, the better utilized the service.
- *Monthly Ridership Trend*—is a series of five charts. The first four charts present trends for selected routes with the fifth chart for the system as a whole. The charts contain these route groupings in order of how they are presented:
 - *First chart: College Hill, East Central, East Harry, East Lincoln, East 13th, East 17th*
 - *Second chart: North Broadway, Meridian, North Meridian, South Meridian, North Waco, Riverside*
 - *Third chart: Rock Road Shuttle, South Broadway, South Main, South Seneca*
 - *Fourth chart: West Central, West Maple, Westside Connector, Winfield*
 - *Fifth chart: Systemwide trend.*

Wichita Transit Bus Cost per Rider: *2005 to 2007*

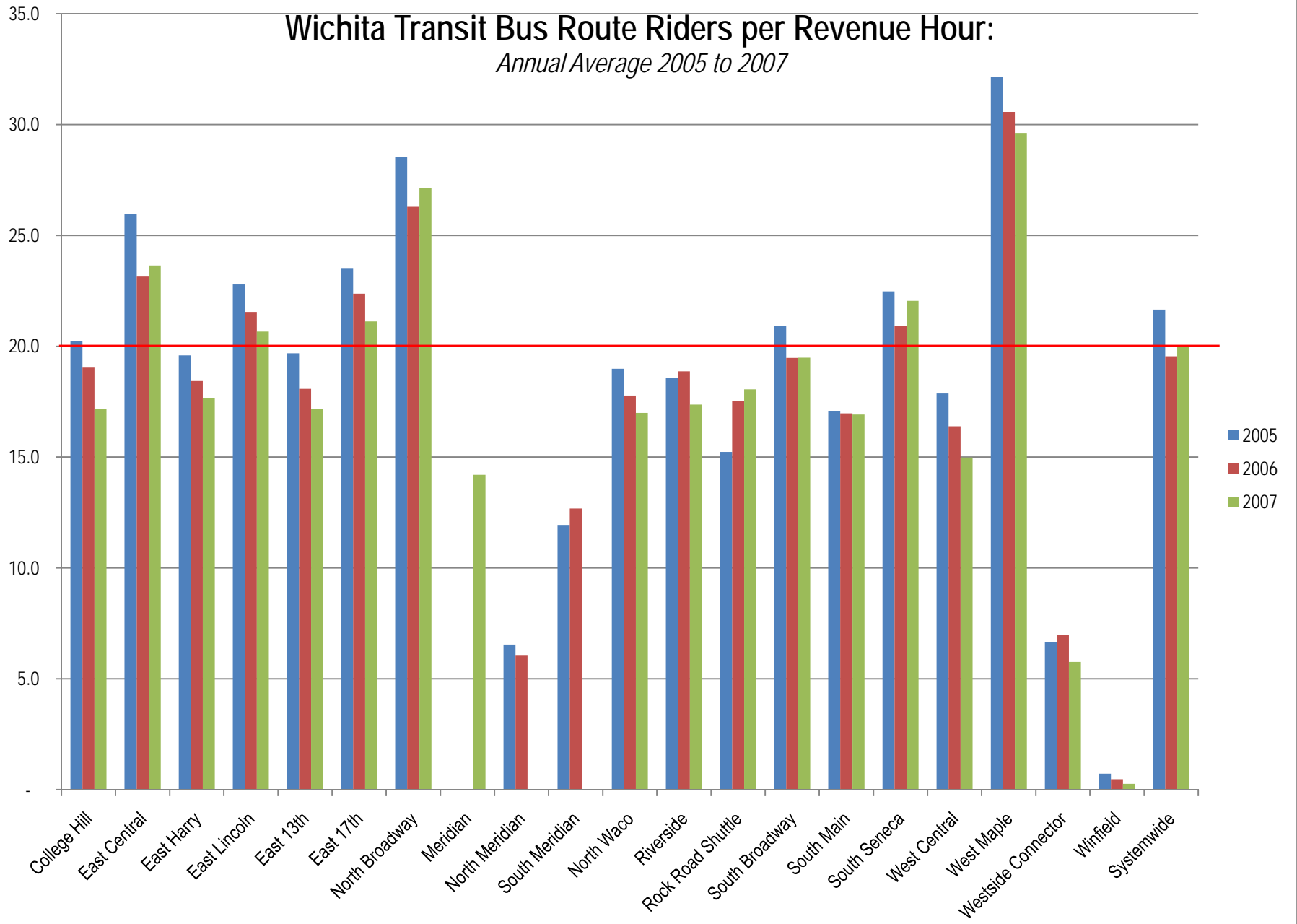


Wichita Transit Bus Subsidy Per Rider: 2005 to 2007

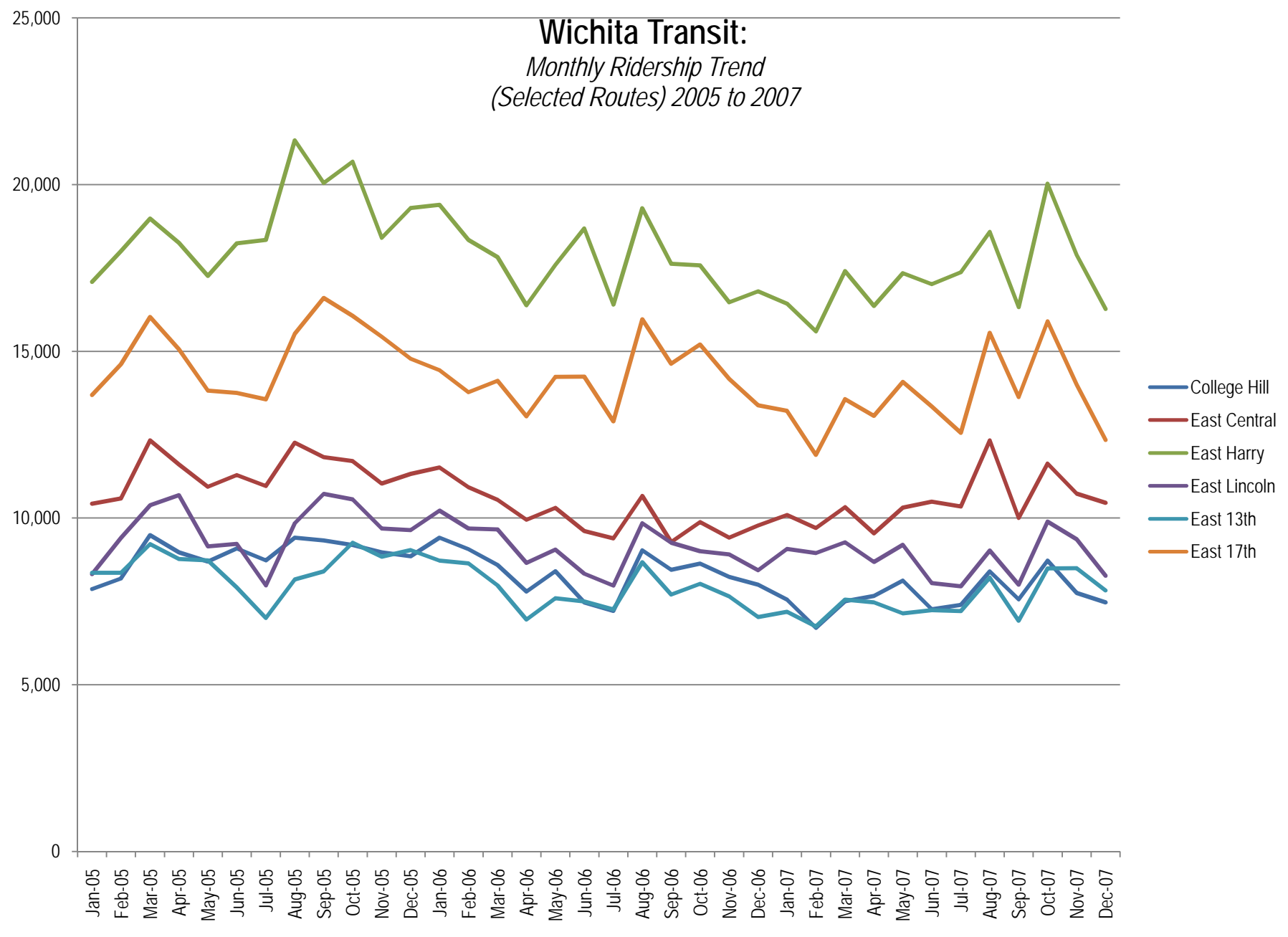


Wichita Transit Bus Route Riders per Revenue Hour:

Annual Average 2005 to 2007

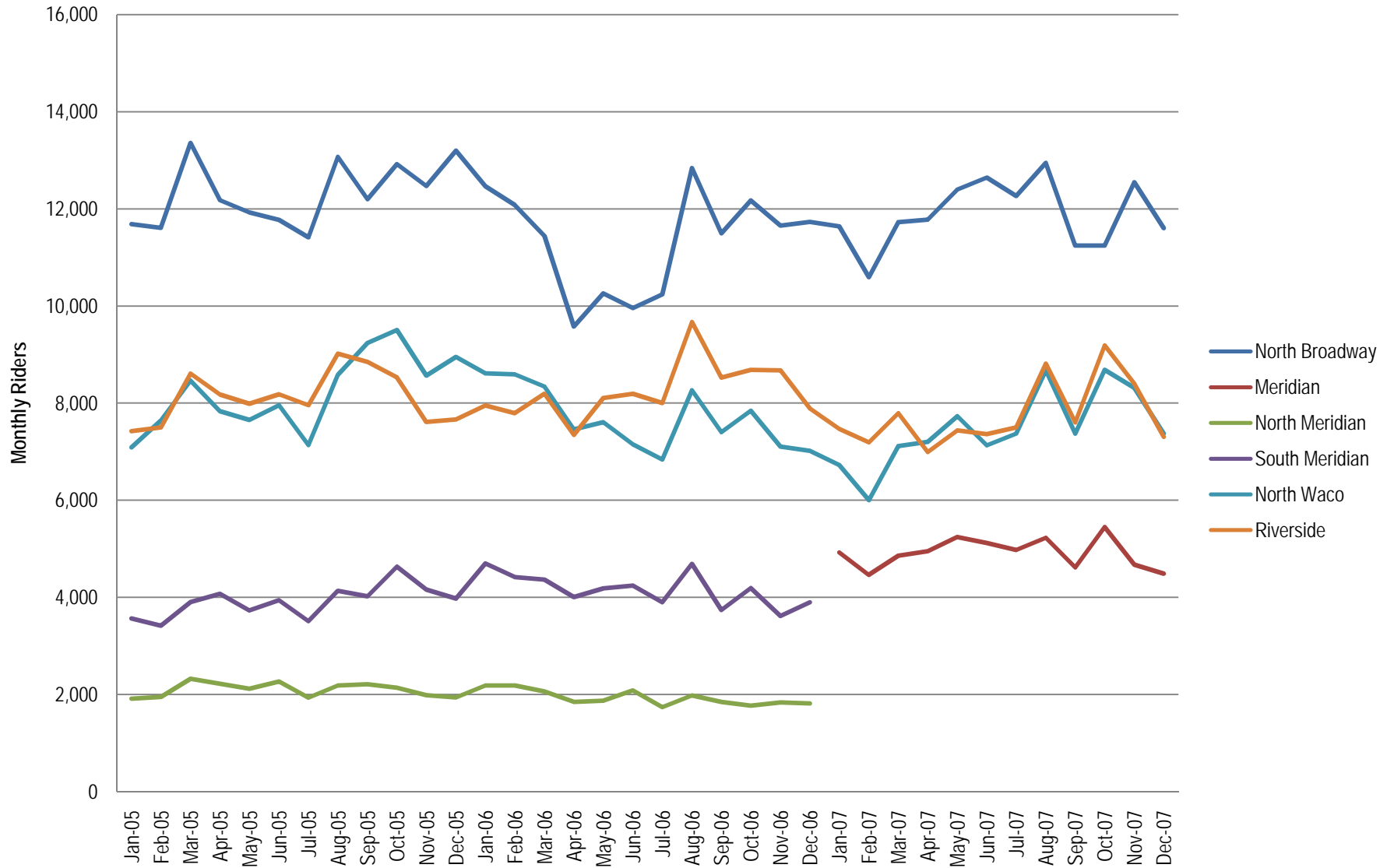


Wichita Transit:
Monthly Ridership Trend
(Selected Routes) 2005 to 2007



Wichita Transit:

*Monthly Ridership Trend
(Selected Routes) 2005 to 2007*

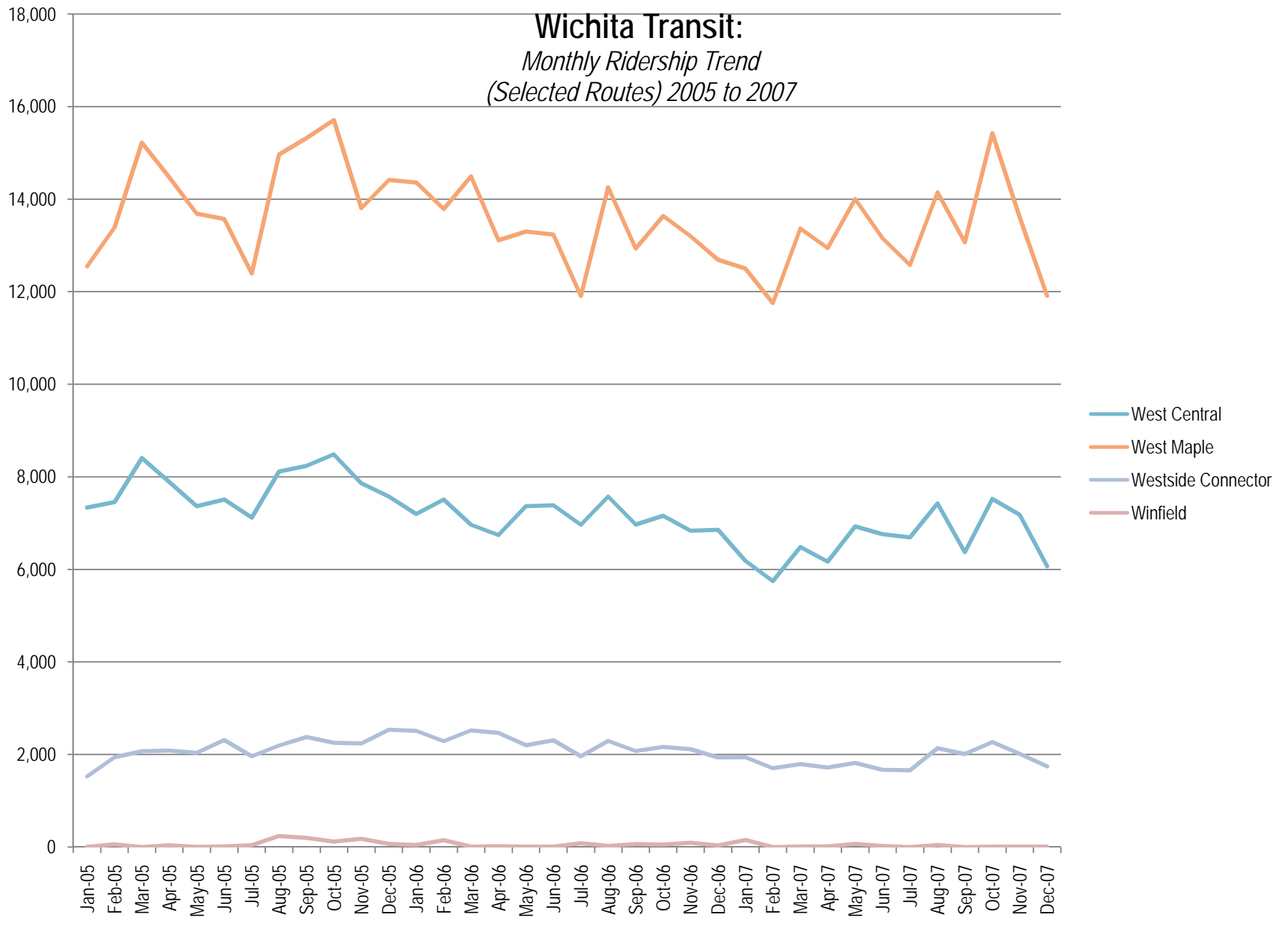


Wichita Transit:

*Monthly Ridership Trend
(Selected Routes) 2005 to 2007*



Wichita Transit:
Monthly Ridership Trend
(Selected Routes) 2005 to 2007



Wichita Transit:

Systemwide Monthly Ridership Trend--2005 to 2007

